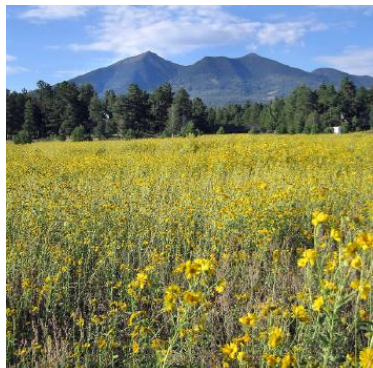


NSELA 2010 Summer Leadership Institute (SLI)



Science Learning As a Socio-cultural and Cognitive Process: Increasing the Academic Literacy of Diverse Learners

June 27 to July 1, 2010 in Flagstaff, Arizona

Since the first Summer Leadership Institute in 1980, the National Science Education Leadership Association has worked to improve science education and foster the dissemination of best practices and research-based professional development throughout the United States. The Summer Leadership Institute (SLI) to be held in Flagstaff, Arizona from June 27 – July 1, 2010 is an intensive science preparation for leaders who are interested in the integration of literacy and science as well as effective practices for English Learners in science.

Planning Instruction That Will Result in Increased Proficiency In Science: A Framework for Understanding the Role That Academic Language, Critical Thinking and Language Play in Science Classrooms.

Participants will explore the efficient use of the language of science and academic literacy. Participating educators will be provided with a frame-work and practical activities that have been shown to increase students' comprehension of science content. During the workshop participants will have an opportunity to experience this framework in action and be given time to consider revisions and adaptations to their current curriculum that can increase student comprehension and motivation. This part of the institute will also focus on the use of writing prompts as a means of promoting scientific thought and argumentation in writing. Also included will be sample lessons to show how specific strategies can support science learning and literacy achievement of English Learners. Participants will learn to:

- Use classroom-tested methods for meeting the science content standards while building stronger readers and writers
- Focus on the language of science to teach both science and academic literacy
- Develop active readers and critical thinkers
- More effectively incorporate text materials into science lessons
- Modify instruction and use research-based strategies to make science content accessible to EL students
- Understand the importance of teaching science to English Learners to promote educational equity
- Use written texts and oral discourse to enrich science instruction and how it can be organized

Featured Presenters:

Rick McCallum, Ph.D.

Arthur Beauchamp, Ed.D

Jerry D. Valadez, Ed.D.

Ana G. Lopez

Science Literacy Specialist at UC Berkeley

Director, Sacramento Area Science Project

Director, Central Valley Science Project

Science Specialist---Central Valley Science Project

Guest Speaker Richard Duschl, Ph.D., Professor of Science Education, Penn State University

Location

Little America is truly a Flagstaff, Arizona vacation at its best. From the 500-acre private forest to the friendly, knowledgeable concierge staff, Little America exemplifies the adventurous spirit and hospitality of Northern Arizona. Whether you are headed for the rugged cliffs and breathtaking vistas of the Grand Canyon or the beauty and eclectic shops of Sedona, Little America Hotel provides the perfect lodging. Housing at Little America is part of the institute experience.



Registration

| Earlybird (until 5.10.10) | | Regular (5.11.10 to 5.24.10) | | Onsite (call ahead) | |
|---------------------------|-------|------------------------------|-------|---------------------|-------|
| Member | \$465 | Member | \$495 | Member | \$505 |
| Nonmember* | \$510 | Nonmember* | \$540 | Nonmember* | \$550 |

* Nonmember registration includes one-year membership to NSELA

Registration includes all materials, breaks, breakfasts (vouchers for those staying at Little America only) and lunches daily, and dinner on Sunday and Wednesday.

Registration available on the NSELA website at: <http://nsela.org/>

Housing & Transportation

Special rates are available for the NSELA SLI at Little America (\$125/night). Please call the hotel directly and ask for the NSELA rate. 1-800-352-4386

Note: Reservations MUST be made before June 4, 2010, to receive this rate.

[Arizona Shuttle](#) offers shuttle service from the Phoenix Airport to Flagstaff for \$39 one way (\$35 if booked online).

Questions

If you have questions, please contact Judy Hamilton at the NSELA office at 1-928-420-3774. You may also email NSELA through the website or Office Manager, Judy Hamilton, at: judyhamilton51@gmail.com